

PROJECT:	_____
LOCATION:	_____
ITEM#:	_____
QUANTITY:	_____

## COMPETITOR SERIES®



**C-BB48-HC**



**C-BB60-HC**



**C-BB72-HC**

# SOLID DOOR BACK BAR REFRIGERATORS

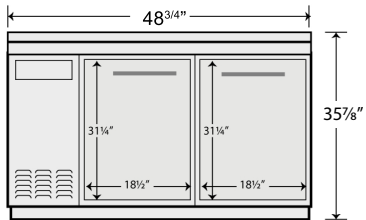
- Beautiful ergonomic construction
- Black corrosion resistant steel exterior, stainless steel interior and stainless steel top
- Digital Controller with Temperature Read-out
- Forced air refrigeration system
- Side mount compressor
- Recessed door handles
- LED interior lighting
- Door locks
- (4) leveling feet included
- Accessory: optional casters upon request
- All Natural R290 Hydrocarbon Refrigerant
- US Department of Energy Certified
- Migali® Protection Plan: 2 Year Parts & Labor Warranty, 5 Years Compressor Warranty

MODEL	DOORS	CAPACITY CU/FT	STORAGE CAPACITY	SHELVES	H/P	AMPS	VOLTAGE	PLUG TYPE	TEMP RANGE	EXTERIOR DIMENSIONS W X D X H*	INSIDE DIMENSIONS W X D X H	PACKAGED DIMENSIONS W X D X H	WEIGHT	PACKAGED WEIGHT
C-BB48-HC	2	11.8	546 (12 oz.) cans 336 (12 oz.) bottles 2 (1/2 barrel) kegs	4	1/3	6.4	115/60/1	Nema 5-15P	+33° F (~) +38° F	48.75" x 24.4" x 35.875"	36" x 20.13" x 31"	51" x 27" x 39"	325 lbs.	355 lbs.
C-BB60-HC	2	15.8	756 (12 oz.) cans 456 (12 oz.) bottles 2 (1/2 barrel) kegs	4	1/3	6.4	115/60/1	Nema 5-15P	+33° F (~) +38° F	60.8" x 24.4" x 35.875"	48" x 20.13" x 31"	63" x 27" x 39"	394 lbs.	421 lbs.
C-BB72-HC	3	19.6	966 (12 oz.) cans 576 (12 oz.) bottles 3 (1/2 barrel) kegs	6	1/3	7.4	115/60/1	Nema 5-15P	+33° F (~) +38° F	72.8" x 24.4" x 35.875"	60" x 20.13" x 31"	75" x 27" x 39"	423 lbs.	456 lbs.

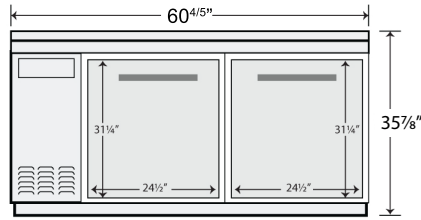
NOTE: MIGALI® RESERVES THE RIGHT TO CHANGE SPECIFICATIONS WITHOUT NOTICE

# DIMENSIONAL DRAWINGS

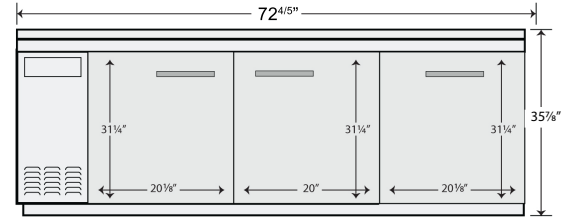
**C-BB48-HC**



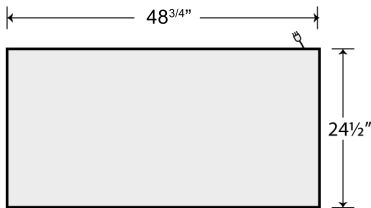
**C-BB60-HC**



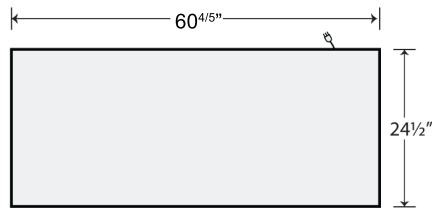
**C-BB72-HC**



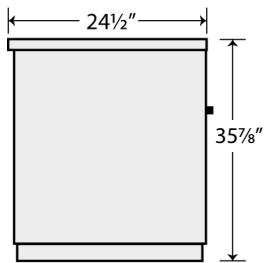
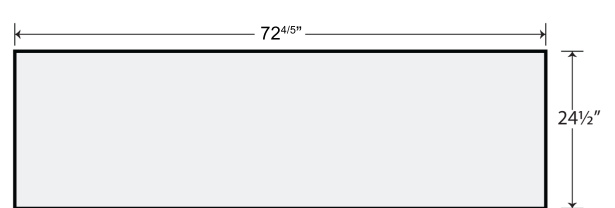
**C-BB48-HC  
TOP VIEW**



**C-BB60-HC  
TOP VIEW**



**C-BB72-HC  
TOP VIEW**



**SIDE VIEW (1,2,3) DOOR MODELS**



MIGALI® REMAINS AN AMERICAN FAMILY COMPANY SINCE 1955